

Word of the Day

Autumn Term 2024

Week 3 – 16th September 2024



'Words unlock the doors to a world of understanding...'

This Week's Words

Grasshopper

parcel

travel

proud

member

whole

Shinobi

debris

consider

protrude

mischief

remove



VOCABULARY NINJA

Grasshopper (Tier 1)

parcel

travel

proud

member

whole



VOCABULARY NINJA

Shinobi (Tier 2)

debris

consider

protrude

mischief

remove



VOCABULARY NINJA



Grasshopper Word of the Day

Word of the Day:

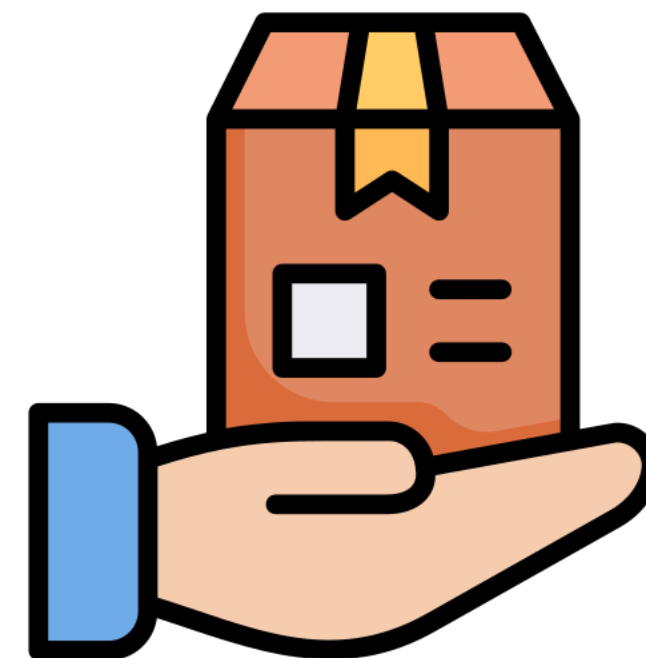
Pronunciation / Syllables

parcel
(*par-cel*)

Word Class
(noun)

Definition:

A parcel is something wrapped in paper, usually so that it can be sent to someone by post.



Dawn was given a **parcel** of sweets to hand out.

Synonym:

package

packet

Antonym:

Prefix / Suffix:

-s

-ed

Rhyme:

Link Word:

small

wrapped



Grasshopper Word of the Day

Word of the Day:

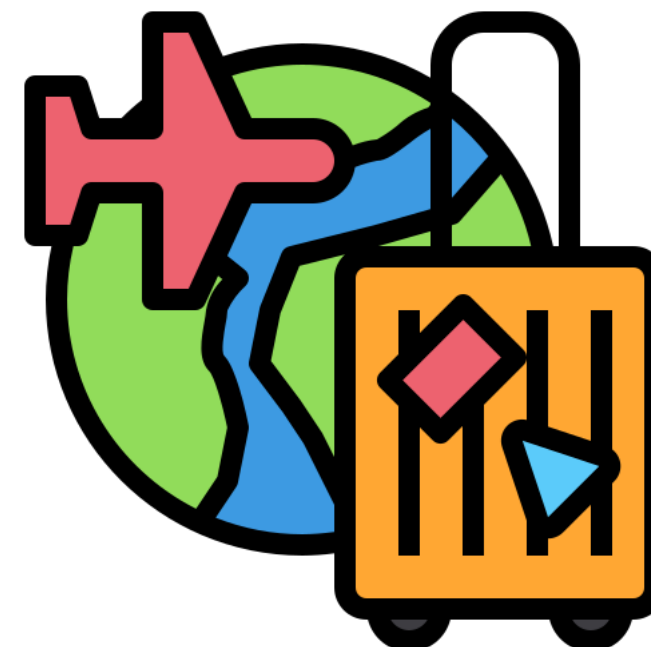
Pronunciation / Syllables

travel
(trav-el)

Word Class
(verb)

Definition:

If you travel, you go from one place to another, often to a place that is far away.



Benji was excited to **travel** abroad for his holiday.

Synonym:

tour

trip

Antonym:

Prefix / Suffix:

-ing

-ed

Rhyme:

gravel

unravel

Link Word:

frequently

safely



Grasshopper Word of the Day

Word of the Day:

Pronunciation / Syllables

proud
(*proud*)

Word Class
(adjective)

Definition:

If you feel proud, you feel pleased about something good that you possess or have done, or about something good that a person close to you has done.



Hua was **proud** of Tia for getting an award.

Synonym:

honoured

satisfied

Antonym:

ignorant

lowly

Prefix / Suffix:

-ly

-est

Rhyme:

allowed

crowd

Link Word:

rightfully

immensely



Grasshopper Word of the Day

Word of the Day:

member
(mem-ber)

Word Class
(noun)

Pronunciation / Syllables

Definition:

A member of a group is one of the people, animals, or things belonging to that group.



Each **member** of the group shared their ideas.

Synonym:

representative

associate

Antonym:

enemy

opponent

Prefix / Suffix:

non-

-ship

Rhyme:

ember

remember

Link Word:

active

valued



Grasshopper Word of the Day

Word of the Day:

Pronunciation / Syllables

whole
(whole)

Word Class
(adjective)

Definition:

If something is whole, it is in one piece and is not broken or damaged.



The class worked as a **whole** to solve the maths problem.

Synonym:

full

perfect

Antonym:

incomplete

partial

Prefix / Suffix:

-ness

-some

Rhyme:

role

goal

Link Word:

entirely

completely



Shinobi Word of the Day

Word of the Day:

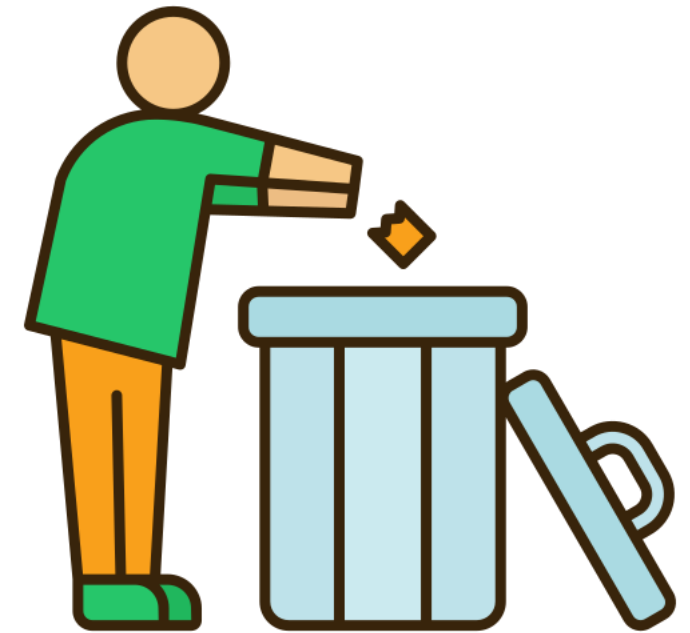
Pronunciation / Syllables

debris
(de-bris)

Word Class
(noun)

Definition:

Debris is pieces from something that has been destroyed or pieces of rubbish or unwanted material that are spread around.



The class cleaned up the **debris** on the classroom floor.

Synonym:

rubbish
wreckage

Antonym:

possessions
belongings

Prefix / Suffix:

Rhyme:

three
tree

Link Word:

scattered
dangerous



Shinobi Word of the Day

Word Class
(verb)

Word of the Day:

consider
(con-sid-er)

Pronunciation / Syllables

Definition:

If you consider a person or thing to be something, you have the opinion that this is what they are.



The class **considered** what topic to write about.

Synonym:

acknowledge

contemplate

Antonym:

disregard

ignore

Prefix / Suffix:

re-

-ed

Rhyme:

bidder

Link Word:

seriously

carefully



Shinobi Word of the Day

Word of the Day:

Pronunciation / Syllables

protrude
(*pro-trude*)

Word Class
(verb)

Definition:

If something protrudes from somewhere, it sticks out.



The books began to **protrude** from Ms Simmons's desk.

Synonym:

bulge

extend

Antonym:

contract

shrink

Prefix / Suffix:

-ed

-ing

Rhyme:

food

mood

Link Word:

slightly

noticeably



Shinobi Word of the Day

Word of the Day:

mischief
(*mis-chief*)

Word Class
(noun)

Pronunciation / Syllables

Definition:

Mischief is playing harmless tricks on people or doing things you are not supposed to do.



Ms Connor noticed a hint of **mischief** in Trevor's eyes.

Synonym:

prank
sabotage

Antonym:

good
help

Prefix / Suffix:

-s
-ous

Rhyme:

Link Word:

light-hearted
cause



Shinobi Word of the Day

Word Class
(verb)

Word of the Day:

remove
(re-move)

Pronunciation / Syllables

Definition:

If you remove something from a place, you take it away.



The class **removed** their worksheets off the table.

Synonym:

abolish
eliminate

Antonym:

add
keep

Prefix / Suffix

-ed
-ing

Rhyme:

improve
approve

Link Word:

temporary
carefully

Vocabulary Laboratory



Describe / Definition:

Use it in a sentence:

Focus Word (write below):

Word Class:

Synonyms:

(words with same / similar meaning)

Antonyms:

(words with opposite meaning)

Draw your sentence:

Rhymes:

(words that sound the same)

Link Words:

(Example: football = pitch, team, player)

Vocabulary Visualiser

Draw the
Grasshopper words
and bring them to life.



Word: parcel

Word: member

Word: travel

Word: whole



Vocabulary Visualiser

Draw the **Shinobi**
words and bring
them to life.



Word: debris

Word: mischief

Word: protrude

Word: remove



Matching Meanings

Draw lines from the **Grasshopper** words to their definitions.



Grasshopper Word

Grasshopper Definitions

parcel

If you feel ***, you feel pleased about something good that you possess or have done, or about something good that a person close to you has done.



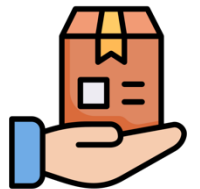
travel

A *** of a group is one of the people, animals, or things belonging to that group.



proud

A *** is something wrapped in paper, usually so that it can be sent to someone by post.



member

If something is ***, it is in one piece and is not broken or damaged.



whole

If you ***, you go from one place to another, often to a place that is far away.



Matching Meanings

Draw lines from the **Shinobi** words to their definitions.



Shinobi Word

Shinobi Definitions

debris

*** is pieces from something that has been destroyed or pieces of rubbish or unwanted material that are spread around.



consider

If you *** something from a place, you take it away.



protrude

*** is playing harmless tricks on people or doing things you are not supposed to do.



mischievous

If something *** from somewhere, it sticks out.



remove

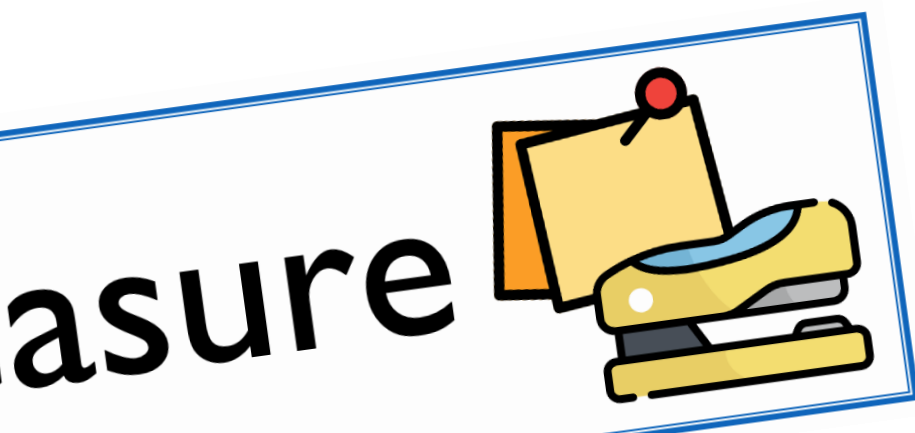
If you *** a person or thing to be something, you have the opinion that this is what they are.





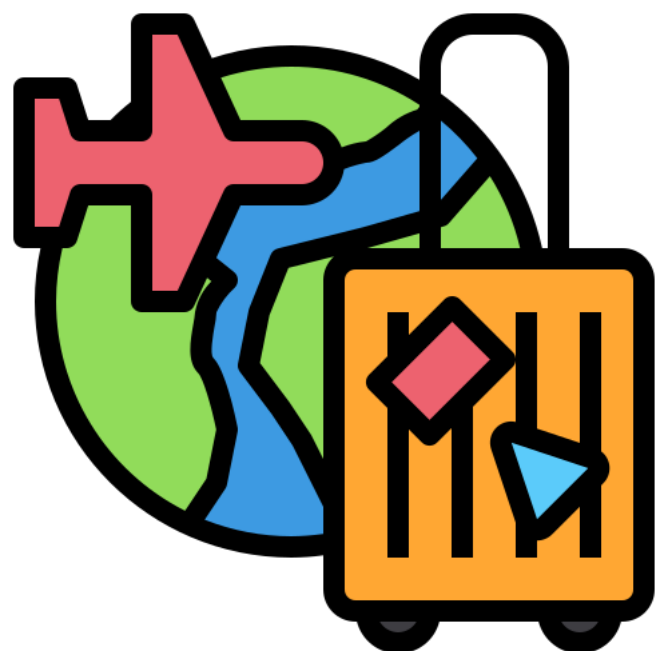
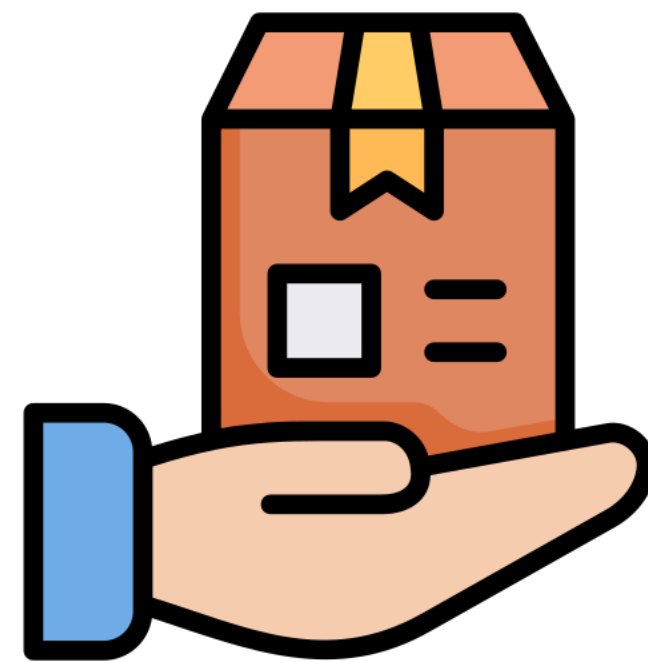
Display Slips

The following slides are for classroom display. As you teach each Word of the Day, words can be displayed in the classroom to enable pupils to use the taught vocabulary in an independent manner.





parcel



travel





proud



member





whole



debris





consider



protrude





mischief



remove






Font Variation

The following display slips contain the same words, but have a more regular font, which have a more regular formation of 'a' and 'g'. Futura is the name of the font.




worried



opini

asure

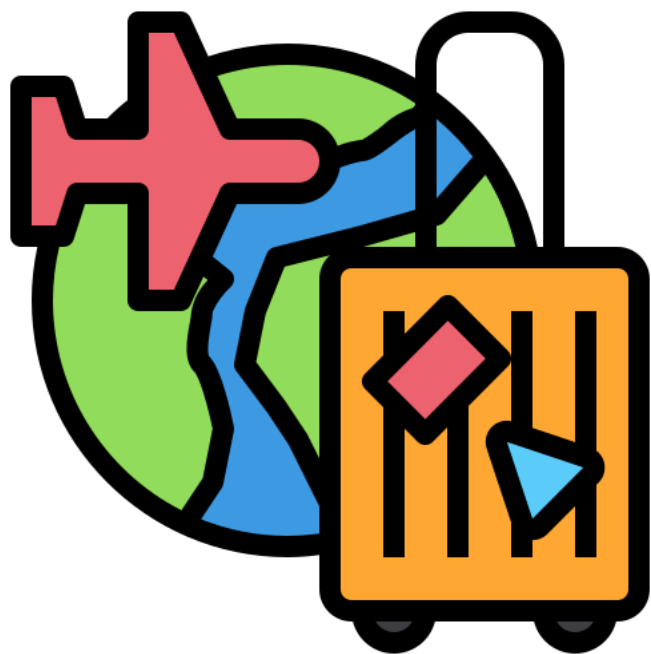
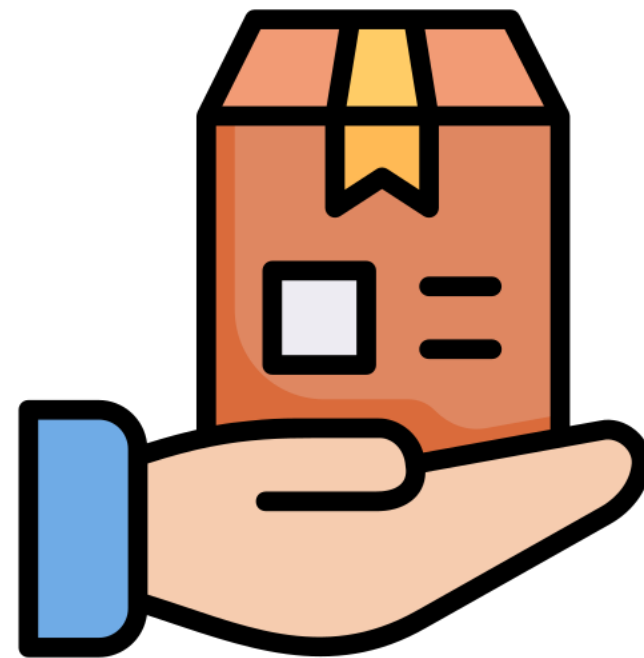


dia





parcel



travel





proud



member





whole



debris





consider



protrude





mischief



remove

